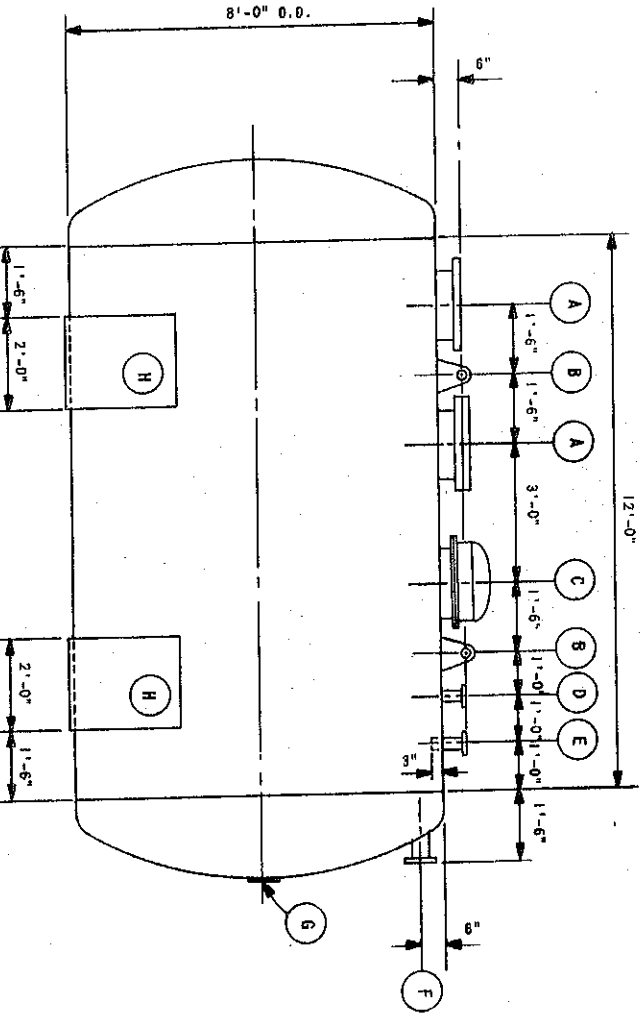
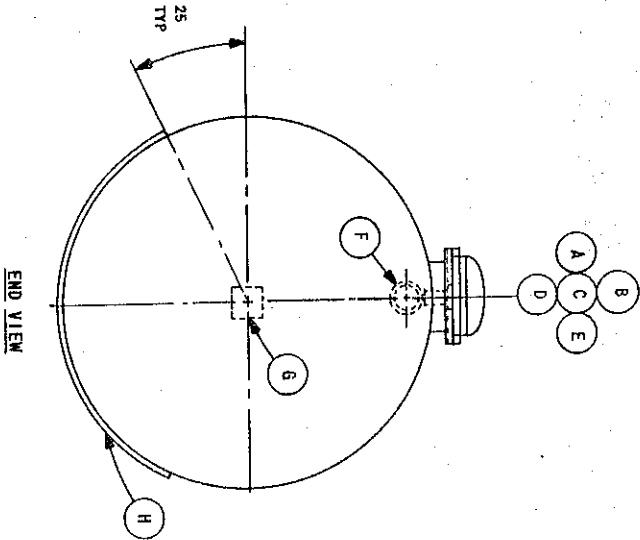


- A - 18" 150# FLAT FACED FLANGED CONNECTION FOR PUMP (2 REQ'D. ONE WITH BLIND FLANGE)
- B - LIFTING LUG (2 REQ'D)
- C - 18" MANHOLE
- D - 2" 150# FLAT FACED FLANGED CONNECTION FOR LIQUID LEVEL GAUGE
- E - 2" 150# FLAT FACED FLANGED CONNECTION FOR ACID FILL
- F - 4" 150# FLAT FACED FLANGED CONNECTION FOR OVERFLOW AND VENT
- G - 1/4" x 8"x8" PLATE FOR PIPE SUPPORT BRACKET
- H - 3/4" SADDLE PLATE (2 REQ'D)



BLACK & VEATCH CONSULTING ENGINEERS		PROJECT		6571/6572	
PUBLIC SERVICE COMPANY OF OKLAHOMA		CONDENSATE POLISHER ACID STORAGE TANK		REV. NO. M38B-06-01	
NORTHEASTERN STATION - UNITS 3 & 4		DATE		REVISION OR ISSUE	
NO.		BY		CHK	
APP		NO.		BY	
APP		NO.		BY	